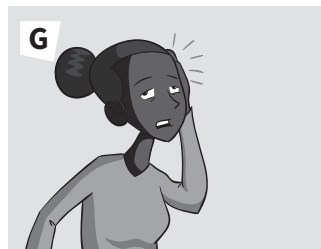
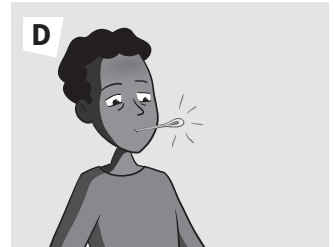
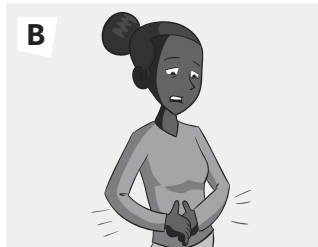


HEALTH PROBLEMS 09

1 Match the pictures (A-G) to the health problems.

toothache a cold stomach ache a broken arm flu a headache a broken leg



2 09 Watch the film. Which of the health problems in Exercise 1 do the students talk about?

3 09 Work with a partner. Match the descriptions (1-8) with the students (A-D). Write the letters. Then watch the film again and check your answers.



He/She ...

- 1 broke his/her arm last year.
- 2 had a bad cold last week.
- 3 had a bad headache two or three days ago.
- 4 had flu last month.
- 5 took some medicine and stayed at home.
- 6 was in bed for a week.
- 7 went to the doctor's and got some medicine.
- 8 went to the hospital and saw a specialist.

ABOUT YOU

4 Now turn to page 80 of the Student's Book and answer the questions.